



## Dimensions

Length overall.....	35,72 m
Breadth.....	8,92 m
Moulded depth.....	6,07 m
Max draft.....	4,10 m
Gross tonnage.....	364 t
Net tonnage.....	109 t
Deadweight.....	129 t
Water displacement.....	560 t
Max speed.....	10-11 knots

## Tank capacity

Fuel type/capacity.....	diesel/80 t
Oil.....	5 t
Fresh water.....	18 m <sup>3</sup>
Fresh water generator.....	8,4 m <sup>3</sup> /day
Sewage waters.....	3,2 m <sup>3</sup>
Bilge water.....	3,98 m <sup>3</sup>
Mud.....	1,67 t

## Power unit

Main engine.....	1x800 hp
Type.....	6NVD 48A-2U
One fixed pitch propeller in Kort nozzle	
Bowthruster.....	55 kWt
Generator.....	2x160 kWt
Ship's power mains.....	320 kWt/220 V/380 V/50 Hz

## Towing and deck equipment

Usable stem deck area.....	140 m <sup>2</sup>
Deck loading.....	1,5 t/m <sup>2</sup>
Hold.....	98 m <sup>3</sup>
A-frame:	
- height/breadth.....	5/2,2 m
- outreach from stern at 45 °.....	2,9 m
- cargo capacity at outreach 45 °.....	3 t
Mob boat Barents 600 HT for 8 persons with 100 hp Yamaha outboard motor	

## Radio navigation equipment

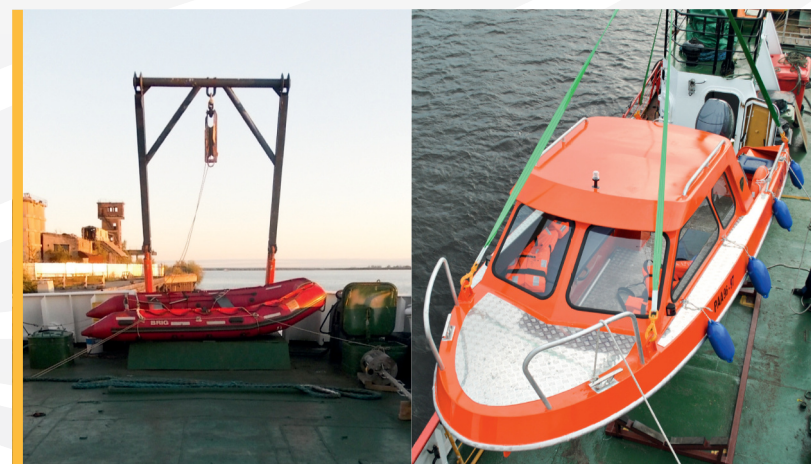
MF/HF DSC.....	1xFuruno FS-2570T
VHF DSC.....	2xFuruno FM 8500
Inmarsat-C.....	1xThrane&Thrane 3020C
Radar transponder.....	2 pcs.
Satellite buoy.....	1 pc.
GMDSS area.....	A1+A2+A3
Radar.....	1xFuruno 1932MK2, 1x530JMA
Echo sounder.....	JRC JFE 380
Speed log.....	JRC JLN 205
NAVTEX.....	1xFuruno NX-500
Magnetic compass.....	1 pc.
Satellite compass.....	1xJRC JLR 20
GPS.....	1xSamyung SPR-1400
Satellite.....	Iridium open port

## Accommodation

Crew.....	11 persons
Special personnel.....	19 persons
Cabins:	
- single.....	3
- double.....	6
- four-berth.....	3
Cook room, mess room, laundry, sanitary facilities, sauna	

## Basic information

Flag.....	Russian Federation
Home port.....	Arkhangelsk
Classification.....	RMRS KM(*) L3 AUT2
Built/modernized.....	1989/2012
Place of building.....	Petrozavodskiy SY, Russia
Project.....	Nº12961
Call sign.....	UCZX
Nº IMO.....	8728440
Purpose.....	expeditionary works supply



## Additional equipment

Mobile laboratory .....	6,0x2,4x2,5 m
- heating, ventilation, water inlet, tables	
Freezer chest for samples.....	300 l
Sewage waters treatment set .....	ECOMAR 16
Fresh water generator .....	PETSEA RO SW
Efficiency.....	8,4 m <sup>3</sup> /day.
Bilge water separator .....	RWO SKIT/S-DEB

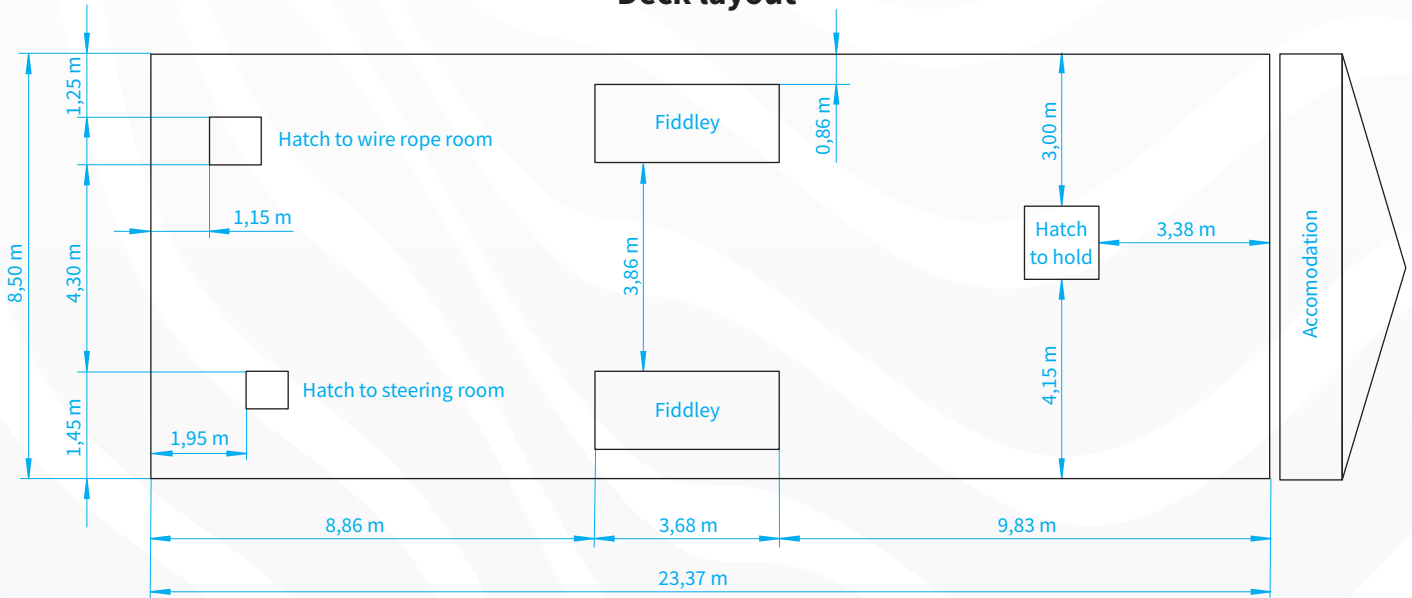
## Sea endurance

Fuel at max speed .....	40 days
Sewage waters (under way/berthed) .....	no limit
Fresh water (under way/berthed) .....	no limit

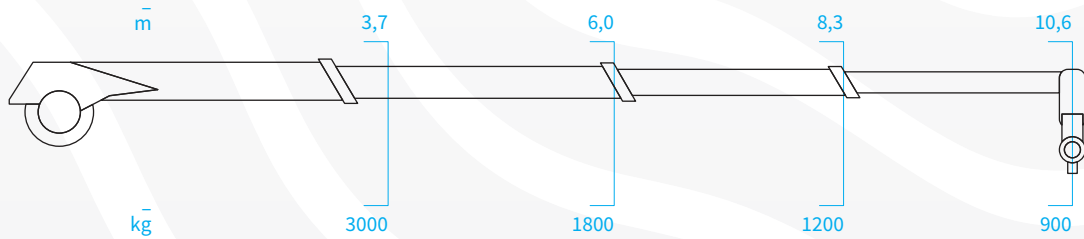
## Rescue equipment

Float boats .....	2x20 persons, 2x10 persons
Life vests .....	33 pcs
Drysuits .....	33 pcs

## Deck layout



## Crane SF-125 cargo capacity at different outreach with windlass



All figures provided with good faith but without guarantee

Arkhangelsk office  
 Pomorskaya st., 32, 3rd floor  
 Tel.: +7 (8182) 65-09-00  
 Fax: +7 (8182) 65-61-11  
 office@belfreight.ru

belfreight.ru

Murmansk office  
 Karla Marksa st., 19, office 410  
 Tel.: +7 (8152) 45-61-81  
 Fax: +7 (8152) 45-97-13  
 office@murmansk.belfreight.ru



**Belfreight**