



### Dimensions

Length overall.....	89,12 m
Breadth.....	12,0 m
Moulded depth.....	6,0 m
Gross tonnage.....	1862 t
Net tonnage.....	558 t
Draught summer.....	4,1 m
Deadweight summer draft.....	2781 t
Draught winter.....	4,0 m
Deadweight winter draft.....	2691 t
Ballast draft.....	1,89 m
Air Draught in ballast:	
- with lifted mast.....	19,5 m
- with lowered mast.....	9,5 m
Tons per 1 cm draught.....	10 t
Height from hold hatch to viewer's eye on deck-bridge.....	3 m

### Cargo space

Holds.....	1xbox shape
Dimensions, LxBxH.....	41,25x9,0x6,0 m
Cargo hatch dimensions.....	20,53x9,0/20,58x9,0 m
Hold lids dimensions.....	20,56x9,2/20,84x9,2 m
Hold capacity.....	78700 f <sup>3</sup> /2220 m <sup>3</sup>
Max permissible load on hold deck.....	8,0 t/m <sup>2</sup>
Hatch type.....	movable pontoon/50 %
Container capacity (TEU) holds/deck/total ...	36/18/54
Max permissible load on hatch.....	1,1 t/m <sup>2</sup>
Height of coamings/with lid.....	1,1 m/1,5 m
Holds ventilation.....	forced, 7 rph
Carriage of dangerous cargo.....	yes
Fire fighting system in holds.....	CO2
Timber fitted.....	yes
Container fitted.....	yes

### Power unit

Main engines.....	2x515 kWt (6NVDS 48A-2U)
Service speed.....	8 knots
Propeller/material/blades amount.....	2xFBP/steel/4

### Auxiliary engines

Generator.....	3x100 kWt (Deutz CCFJ100J-WV)
Emergency generator.....	1x64 12/14 (50 kWt)
Bow thruster.....	no
Ship's power mains.....	380 V/50 Hz

### Ballast system

Amount/ballast tank capacity.....	5/497,8 m <sup>3</sup>
Ballast pump, power.....	2x63 m <sup>3</sup> /hour
Time to ballast take in/give out.....	8/10 hours

### Tank capacity

Fuel type/capacity.....	diesel/98 m <sup>3</sup> = 84 t
Oil.....	4,5 m <sup>3</sup> /4,0 t
Fresh water.....	28,6 m <sup>3</sup>
Sewage waters.....	16,9 m <sup>3</sup>
Bilge waters.....	9,3 m <sup>3</sup>
Sludge.....	2,0 m <sup>3</sup>

### Sea endurance

Fuel.....	28 days
Fresh water.....	28 days
Sewage waters.....	6 days

### Accommodation

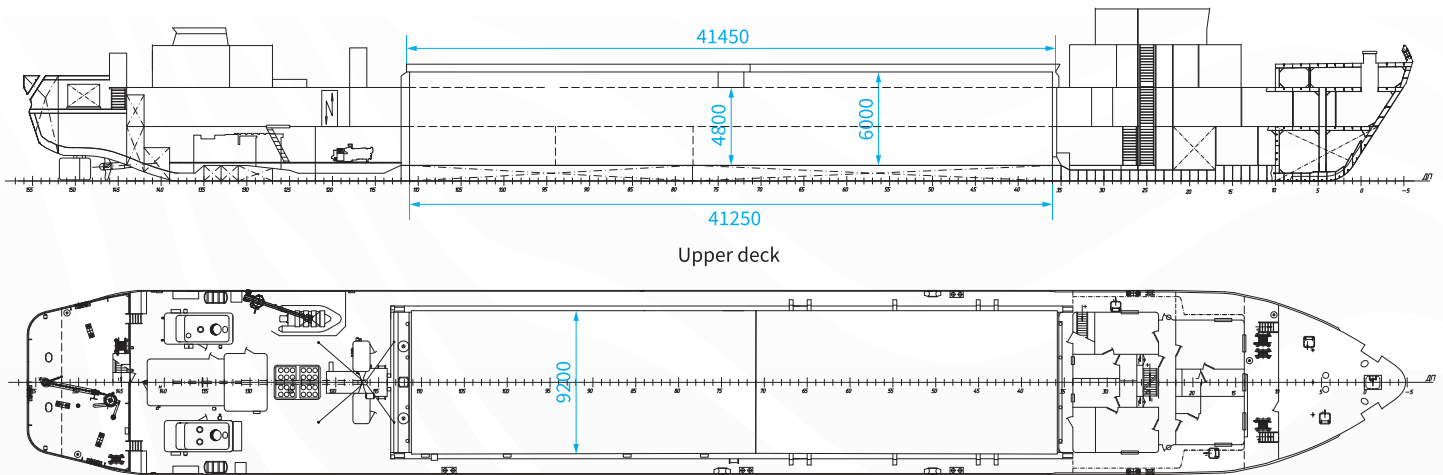
Crew.....	11 persons
Cabins single/double.....	8/2
Passengers.....	1 person

### Basic information

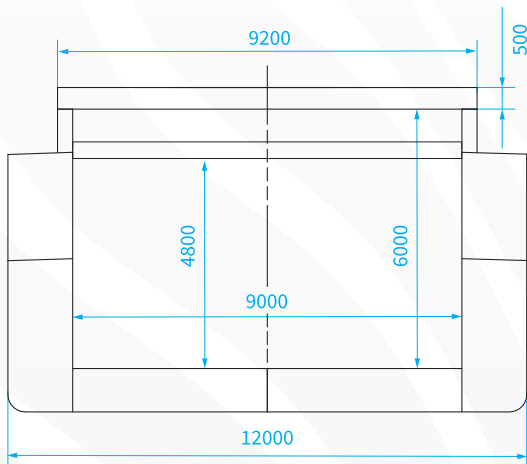
Flag.....	Russian Federation
Home port.....	Arkhangelsk
Classification.....	RMRS KM(*) L4 R2-RSN
Built/modernized.....	1992/2010 (hull renovation 2SS)
Place of building.....	Rybinsky SY, Russian Federation
Project.....	19620/ST
Call sign.....	UIBW
Nº IMO.....	8870839
Purpose.....	equipped for the transportation of timber cargo, containers



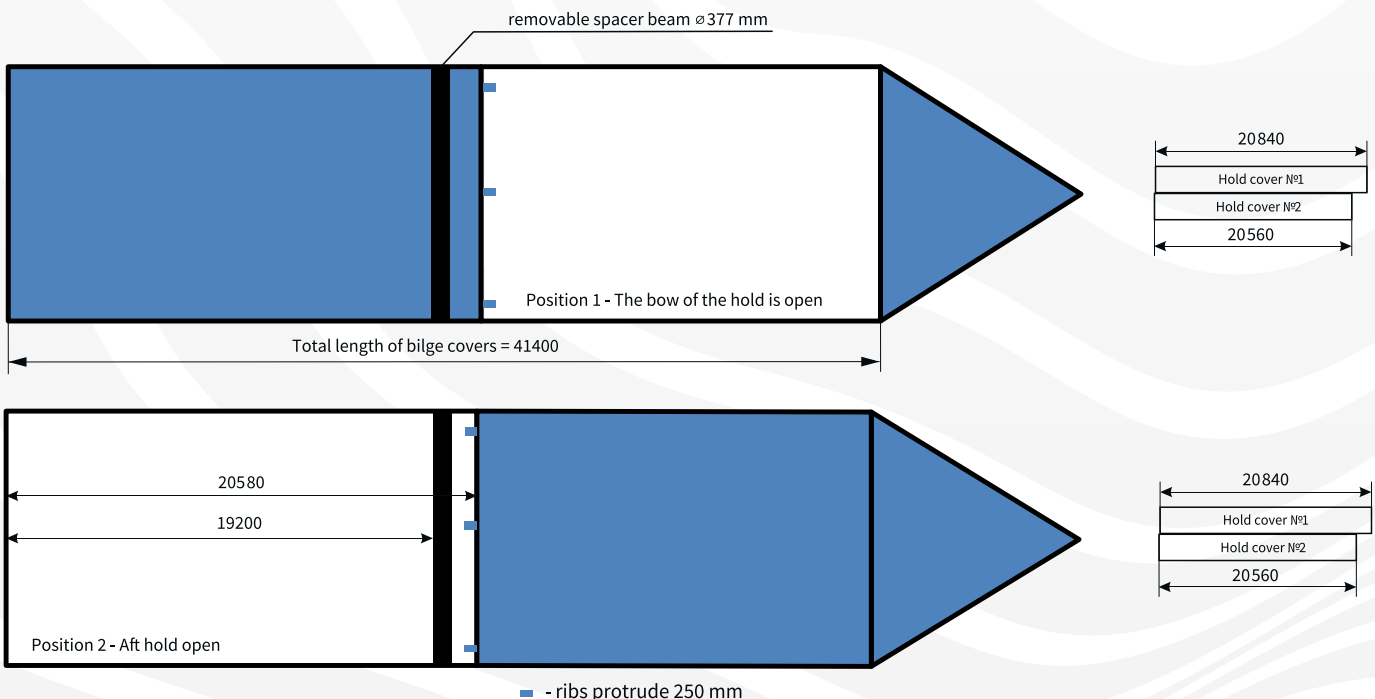
## General layout and main hold dimensions



Upper deck



Hold dimensions	
Dimensions LxBxH, m	41,25x9,0x6,0
Cargo hatch dimensions, m	20,53x9,0/20,58x9,0
Hatch dimensions, m	20,56x9,2/20,84x9,2
Hold capacity, f <sup>3</sup>	78700
Hold capacity, m <sup>3</sup>	2220
Hold floor space, m <sup>2</sup>	370
Container carrying capacity hatch/hold, TEU	18/36
Max permissible load on hold deck, t/m <sup>2</sup>	8,0
Max permissible load on hatch, t/m <sup>2</sup>	1,1



The vessel hull has been modernized upon the project of design bureau Marine Engineering Bureau in order to improve cargo area and loading characteristics by means of dismantling/replacement of a cross deck in the middle part of cargo hold to a removable hold-down beam and a corresponding reequipment of hold hatch.

All figures provided with good faith but without guarantee

Arkhangelsk office  
Pomorskaya st., 32, 3rd floor  
Tel.: +7 (8182) 65-09-00  
Fax: +7 (8182) 65-61-11  
office@belfreight.ru

Murmansk office  
Karla Marksa st., 19, office 410  
Tel.: +7 (8152) 45-61-81  
Fax: +7 (8152) 45-97-13  
office@murmansk.belfreight.ru

belfreight.ru



**Belfreight**