



## Dimensions

Length overall.....	89,12 m
Breadth .....	12,3 m
Moulded depth.....	6,0 m
Gross tonnage.....	1866 t
Net tonnage.....	559 t
Draught summer .....	4,1 m
Deadweight summer draft .....	2714 t
Draught winter.....	4,0 m
Deadweight winter draft .....	2629 t
Ballast draft .....	1,89 m
Air Draught in ballast:	
- with lifted mast .....	19,5 m
- with lowered mast .....	14,54 m
Tons per 1 cm draught .....	10 t
Height from hold hatch to viewer's eye on deck-bridge.....	3 m

## Cargo space

Holds.....	1xbox shape
Dimensions, LxBxH .....	41,15x9,0x6,0 m
Cargo hatch dimensions .....	19,8x9,0/19,8x9,0 m
Hold lids dimensions.....	20x9,25/20x9,25 m
Hold capacity.....	78700 f <sup>3</sup> /2220 m <sup>3</sup>
Max permissible load on hold deck .....	8,0 t/m <sup>2</sup>
Hatch type .....	movable pontoon/50 %
Container capacity (TEU) holds/deck/total....	36/18/54
Max permissible load on hatch .....	1,0 t/m <sup>2</sup>
Height of coamings/with lid.....	1,1 m/1,5 m
Holds ventilation .....	forced, 7 rph

## Crane

Cargo capacity.....	40 t when arm crane is 12,0 m long 24 t when arm crane is 19,5 m long
---------------------	--

## Power unit

Main engines.....	2x515 kWt (6NVDS 48A-2U)
Service speed .....	8 knots
Propeller/material/blades amount .....	2xFBP/steel/4

## Auxiliary engines

Generator.....	2x150 kWt, 1x100 kWt
Emergency generator.....	1x50 kWt
Bow thruster .....	no
Ship's power mains .....	380 V/50 Hz

## Ballast system

Amount/ballast tank capacity .....	7/528,0 m <sup>3</sup>
Ballast pump, power .....	1x63,1x80 m <sup>3</sup> /hour
Time to ballast take in/give out .....	8/10 hours

## Tank capacity

Fuel type/capacity.....	diesel/95,7 m <sup>3</sup> = 82,3 t
Oil.....	4,8 m <sup>3</sup> /4,32 t
Fresh water .....	28,6 m <sup>3</sup>
Sewage waters.....	16,4 m <sup>3</sup>
Bilge waters .....	9,3 m <sup>3</sup>
Sludge .....	4,8 m <sup>3</sup>

## Sea endurance

Fuel .....	28 days
Fresh water .....	28 days
Sewage waters.....	6 days

## Accommodation

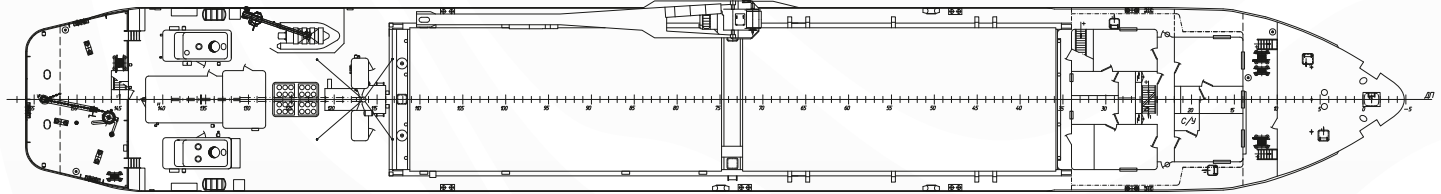
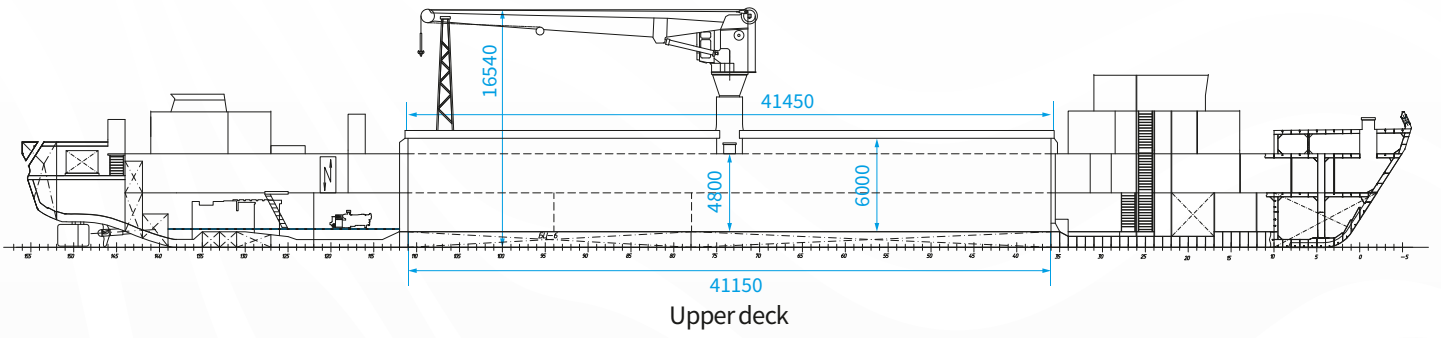
Crew .....	11 persons
Cabins single/double .....	8/2
Passengers.....	1 person

## Basic information

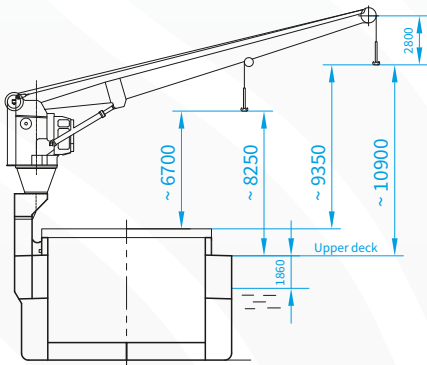
Flag .....	Russian Federation
Home port .....	Arkhangelsk
Classification .....	RMRS KM(*) L4 R2-RSN
Built/modernized .....	1989/2009 (hull renovation 3SS)
Place of building.....	Rybinsky SY, Russian Federation
Project.....	19620/ST
Call sign .....	UBNE8
Nº IMO .....	8869397
Purpose.....	equipped for the transportation of timber cargo, containers, including reefer containers



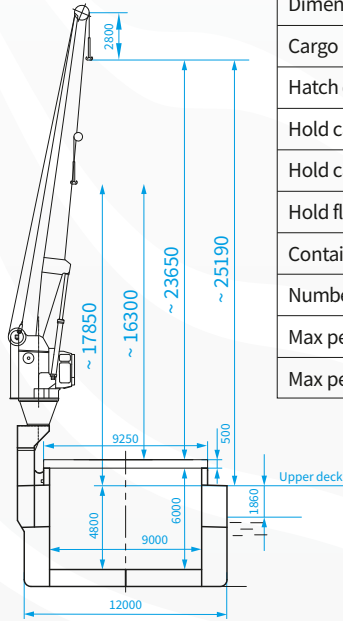
# General layouts and main hold dimensions



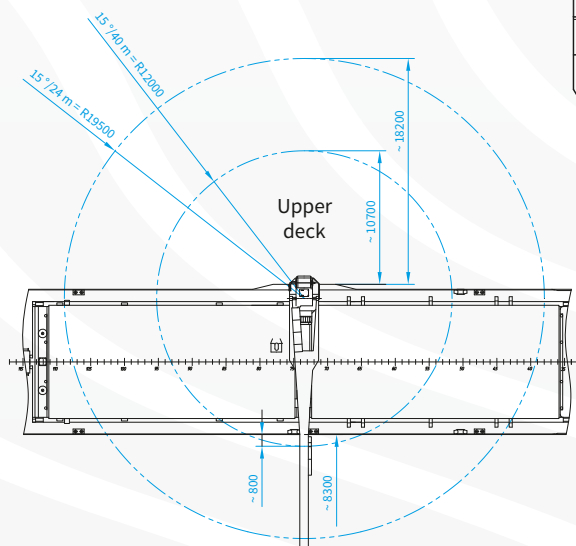
Angle of inclination 15°



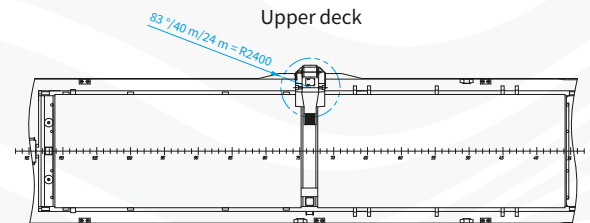
Angle of inclination 85°



Hold dimensions	
Dimensions LxBxH, m	41,15x9,0x6,0
Cargo hatch dimensions, m	19,8x9,0/19,8x9,0
Hatch dimensions, m	20x9,25/20x9,25
Hold capacity, f <sup>3</sup>	78700
Hold capacity, m <sup>3</sup>	2220
Hold floor space, m <sup>2</sup>	370
Container carrying capacity hatch/hold, TEU	18/36
Number of socket for ref-containers deck/hold	12/12
Max permissible load on hold deck, t/m <sup>2</sup>	8,0
Max permissible load on hatch, t/m <sup>2</sup>	1,0



Upper deck



All figures provided with good faith but without guarantee

Arkhangelsk office  
Pomorskaya st., 32, 3rd floor  
Tel.: +7 (8182) 65-09-00  
Fax: +7 (8182) 65-61-11  
office@belfreight.ru

Murmansk office  
Karla Marksa st., 19, office 410  
Tel.: +7 (8152) 45-61-81  
Fax: +7 (8152) 45-97-13  
office@murmansk.belfreight.ru

belfreight.ru



**Belfreight**