



## Dimensions

Length overall.....	89,12 m
Breadth .....	12,0 m
Moulded depth .....	6,0 m
Gross tonnage .....	1862 t
Net tonnage.....	558 t
Draught summer .....	4,1 m
Deadweight summer draft .....	2781 t
Draught winter .....	4,0 m
Deadweight winter draft .....	2691 t
Ballast draft .....	1,89 m
Air Draught in ballast:	
- with lifted mast .....	19,5 m
- with lowered mast .....	9,5 m
Tons per 1 cm draught .....	10 t
Height from hold hatch to viewer's eye on deck-bridge .....	3 m

## Cargo space

Holds.....	1xbox shape
Dimensions, LxBxH .....	41,25x9,0x6,0 m
Cargo hatch dimensions .....	20,53x9,0/20,58x9,0 m
Hold lids dimensions .....	20,56x9,2/20,84x9,2 m
Hold capacity.....	78700 f <sup>3</sup> /2220 m <sup>3</sup>
Max permissible load on hold deck.....	8,0 t/m <sup>2</sup>
Hatch type .....	movable pontoon/50 %
Container capacity (TEU) holds/deck/total ...	36/18/54
Max permissible load on hatch .....	1,1 t/m <sup>2</sup>
Height of coamings/with lid .....	1,1 m/1,5 m
Holds ventilation .....	forced, 7 rph
Carriage of dangerous cargo.....	yes
Fire fighting system in holds.....	CO2
Timber fitted.....	yes
Container fitted .....	yes

## Power unit

Main engines .....	2x515 kWt (6NVDS 48A-2U)
Service speed .....	8 knots
Propeller/material/blades amount .....	2xFBP/steel/4

## Auxiliary engines

Generator.....	3x100 kWt (Deutz CCFJ100J-WV)
Emergency generator.....	1x64 12/14 (50 kWt)
Bow thruster.....	no
Ship's power mains .....	380 V/50 Hz

## Ballast system

Amount/ballast tank capacity .....	5/497,8 m <sup>3</sup>
Ballast pump, power.....	2x63 m <sup>3</sup> /hour
Time to ballast take in/give out.....	8/10 hours

## Tank capacity

Fuel type/capacity.....	diesel/98 m <sup>3</sup> = 84 t
Oil.....	4,5 m <sup>3</sup> /4,0 t
Fresh water .....	28,6 m <sup>3</sup>
Sewage waters.....	16,9 m <sup>3</sup>
Bilge waters .....	9,3 m <sup>3</sup>
Sludge .....	2,0 m <sup>3</sup>

## Sea endurance

Fuel .....	28 days
Fresh water .....	28 days
Sewage waters.....	6 days

## Accommodation

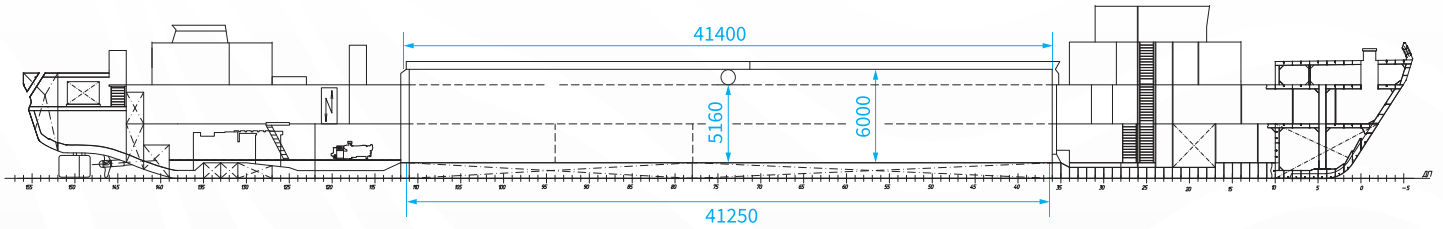
Crew .....	11 persons
Cabins single/double .....	8/2
Passengers.....	1 person

## Basic information

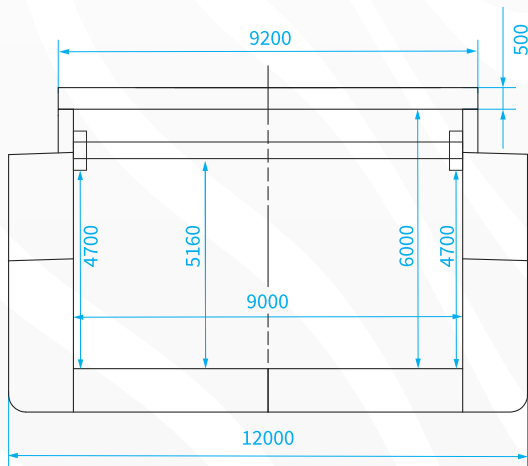
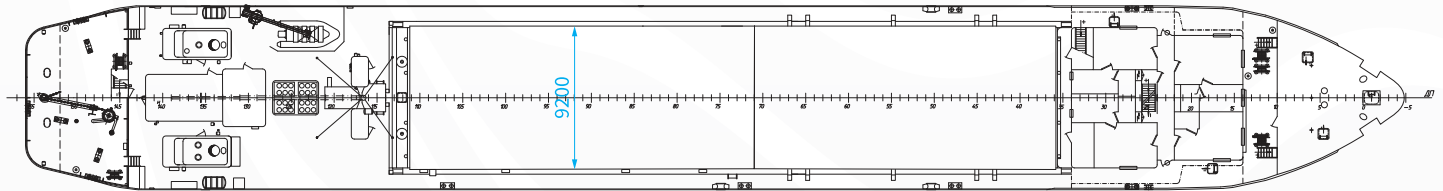
Flag .....	Russian Federation
Home port .....	Arkhangelsk
Classification .....	RMRS KM(*) L4 R2-RSN
Built/modernized .....	1992/2010 (hull renovation 2SS)
Place of building.....	Rybinsky SY, Russian Federation
Project.....	19620/ST
Call sign .....	UIBW
Nº IMO .....	8870839
Purpose.....	equipped for the transportation of timber cargo, containers



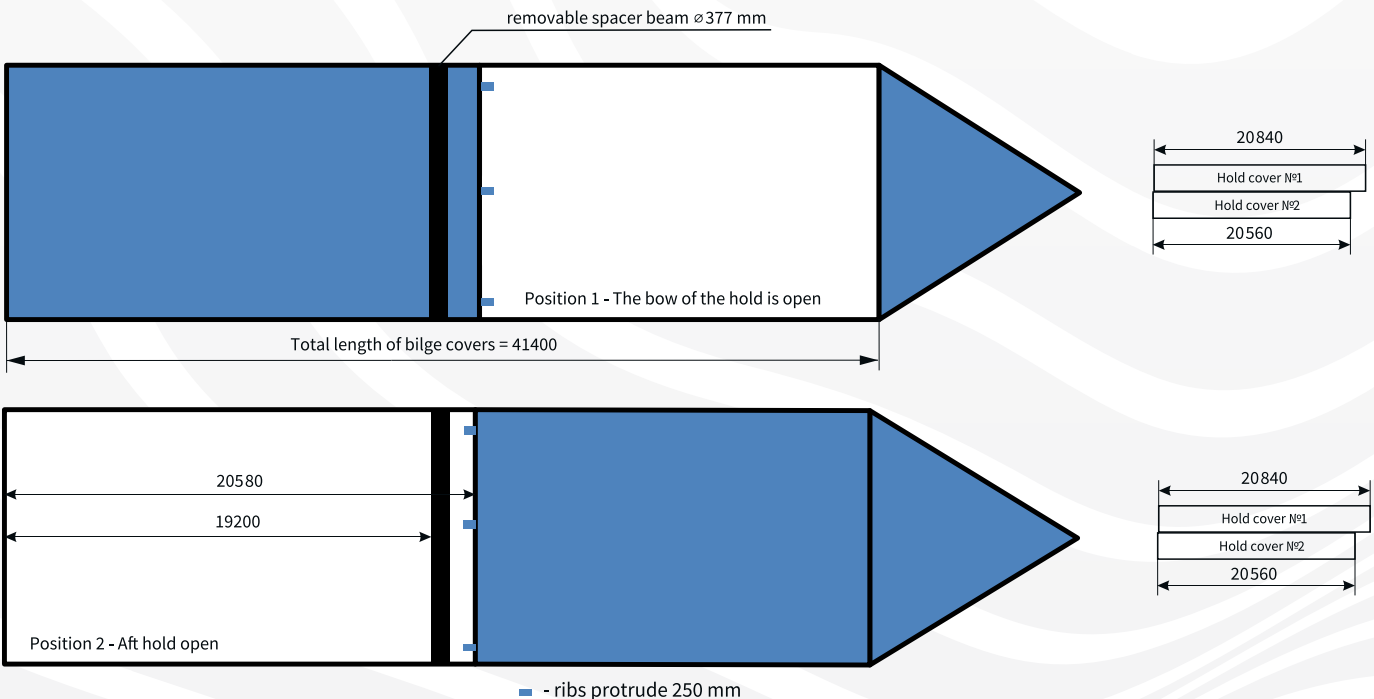
# General layout and main hold dimensions



Upper deck



Hold dimensions	
Dimensions LxBxH, m	41,25x9,0x6,0
Cargo hatch dimensions, m	20,53x9,0/20,58x9,0
Hatch dimensions, m	20,56x9,2/20,84x9,2
Hold capacity, f <sup>3</sup>	78700
Hold capacity, m <sup>3</sup>	2220
Hold floor space, m <sup>2</sup>	370
Container carrying capacity hatch/hold, TEU	18/36
Max permissible load on hold deck, t/m <sup>2</sup>	8,0
Max permissible load on hatch, t/m <sup>2</sup>	1,1



The vessel hull has been modernized upon the project of design bureau Marine Engineering Bureau in order to improve cargo area and loading characteristics by means of dismantling/replacement of a cross deck in the middle part of cargo hold to a removable hold-down beam and a corresponding reequipment of hold hatch.

All figures provided with good faith but without guarantee

Arkhangelsk office  
 Pomorskaya st., 32, 3rd floor  
 Tel.: +7 (8182) 65-09-00  
 Fax: +7 (8182) 65-61-11  
 office@belfreight.ru

Murmansk office  
 Karla Marksa st., 19, office 410  
 Tel.: +7 (8152) 45-61-81  
 Fax: +7 (8152) 45-97-13  
 office@murmannsk.belfreight.ru

belfreight.ru



**Belfreight**